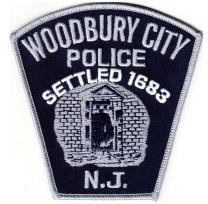


Woodbury City Police Department

Traffic Unit

220 S. Broad St.
Woodbury, NJ 08096



Speed Enforcement Evaluator

Location:
North Bayard Ave

GPS:

0' 0.0000 Undefined
0' 0.0000 Undefined

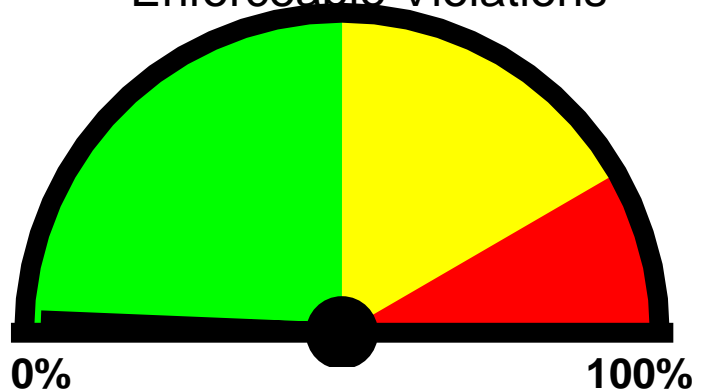
Closest Cross Street:
Hunter Street

Analysis Dates:
Friday, January 13, 2023
Saturday, January 21, 2023

Equipment Used:
JAMAR Covert Radar

Installed By:
PtIm. J. Duffy #3100

Total Percentage of
Enforceable Violations



0%

100%

Posted Speed Limit: 25 MPH

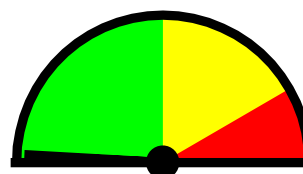
Enforcement Tolerance: 6 MPH

Enforcement Limit: 32 MPH & Up

Percentage Above Limit: 1.3%

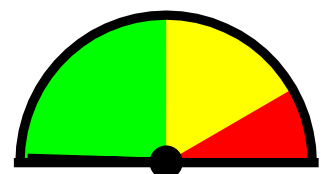
Enforcement Rating: **LOW**

Lane1



Percent Above Limit: 1.8%
Enforcement Rating: **LOW**

Lane2



Percent Above Limit: 0.9%
Enforcement Rating: **LOW**

Combined

| 1-5 | 6-10 | 11-15 | 16-20 | 21-25 | 26-30 | 31-35 | 36-40 | 41-45 | 46-50 | 51-55 | 56-60 | 61-65 | >65 |
|-----|------|-------|-------|-------|-------|-------|-------|-------|-------|-------|-------|-------|-----|
| 0 | 3 | 52 | 379 | 600 | 194 | 21 | 2 | 0 | 0 | 0 | 0 | 0 | 0 |

85 percentile = 25

Lane1

| 1-5 | 6-10 | 11-15 | 16-20 | 21-25 | 26-30 | 31-35 | 36-40 | 41-45 | 46-50 | 51-55 | 56-60 | 61-65 | >65 |
|-----|------|-------|-------|-------|-------|-------|-------|-------|-------|-------|-------|-------|-----|
| 0 | 1 | 27 | 152 | 241 | 73 | 10 | 1 | 0 | 0 | 0 | 0 | 0 | 0 |

85 percentile = 25

Lane2

| 1-5 | 6-10 | 11-15 | 16-20 | 21-25 | 26-30 | 31-35 | 36-40 | 41-45 | 46-50 | 51-55 | 56-60 | 61-65 | >65 |
|-----|------|-------|-------|-------|-------|-------|-------|-------|-------|-------|-------|-------|-----|
| 0 | 2 | 25 | 227 | 359 | 121 | 11 | 1 | 0 | 0 | 0 | 0 | 0 | 0 |

85 percentile = 25